

**NOTES**

AT ALL FIXED POINTS OF SUPPORT, NUTS FOR ANCHOR BOLTS ARE TO BE TIGHTENED FINGER TIGHT AND THEN BACKED OFF 1/2" TURN. THE THREAD OF THE NUT AND BOLT SHALL THEN BE BURRED WITH A SHARP POINTED TOOL.

THE 2" Ø PIPE SLEEVE SHALL BE CUT FROM SCHEDULE 40 PVC PLASTIC PIPE. THE PVC PLASTIC PIPE SHALL MEET THE REQUIREMENTS OF ASTM D1785.

THE PAYMENT FOR THE PIPE SLEEVES SHALL BE INCLUDED IN THE SEVERAL PAY ITEMS.

FOR PAINTED STRUCTURAL STEEL (EXCLUDING AASHTO M270 GRADE 50W), SOLE PLATES, ANCHOR BOLTS, NUTS AND WASHERS SHALL BE GALVANIZED IN ACCORDANCE WITH THE STANDARD SPECIFICATIONS.

FOR AASHTO M270 GRADE 50W STRUCTURAL STEEL, SOLE PLATE SHALL BE AASHTO M270 GRADE 50W AND SHALL NOT BE GALVANIZED. ANCHOR BOLTS, NUTS AND WASHERS SHALL BE GALVANIZED IN ACCORDANCE WITH THE STANDARD SPECIFICATIONS.

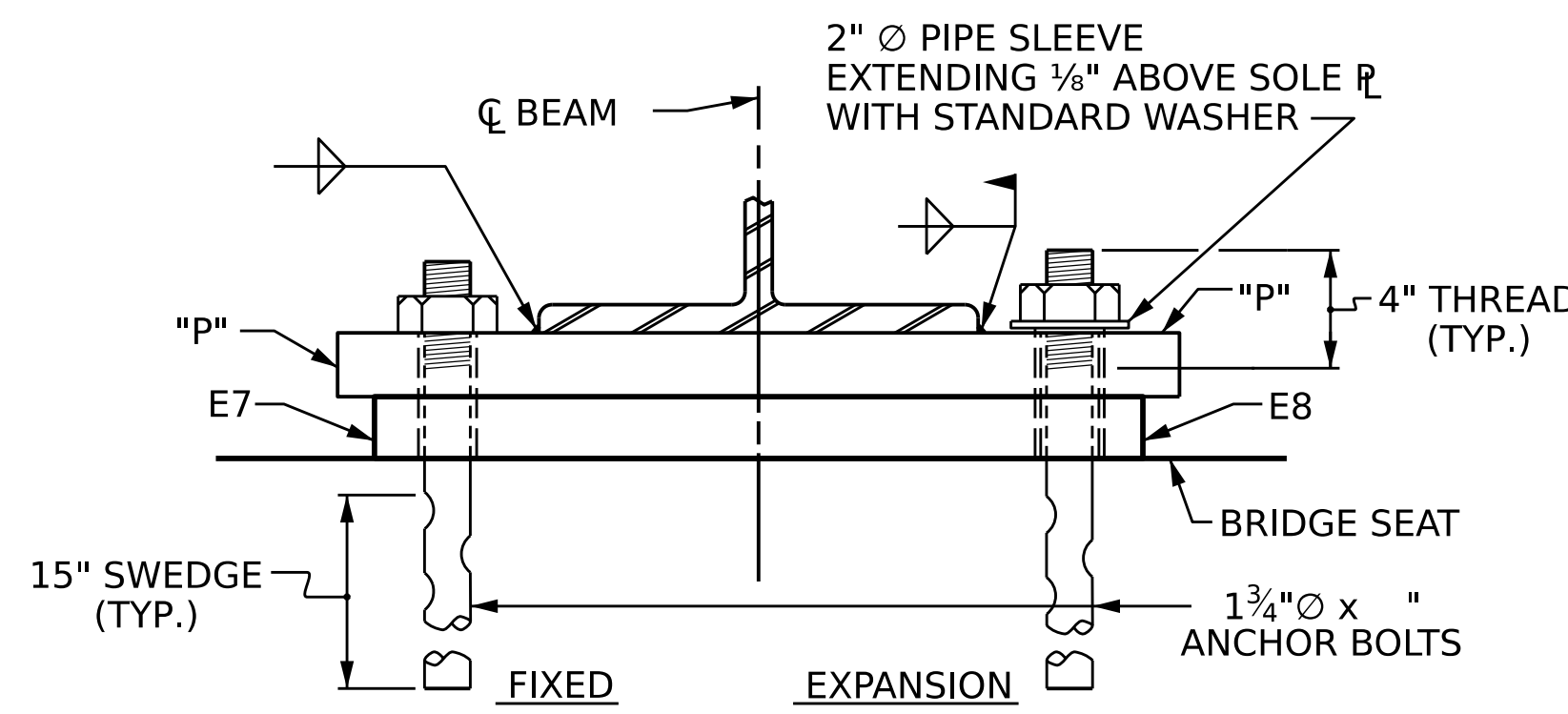
ANCHOR BOLTS SHALL MEET THE REQUIREMENTS OF ASTM A449. NUTS SHALL MEET THE REQUIREMENTS OF AASHTO M291-DH OR AASHTO M292-2H. WASHERS SHALL MEET THE REQUIREMENTS OF AASHTO M293. SHOP DRAWINGS ARE NOT REQUIRED FOR ANCHOR BOLTS, NUTS AND WASHERS. SHOP INSPECTION IS REQUIRED.

WHEN FIELD WELDING THE SOLE PLATE TO THE GIRDER FLANGE, USE TEMPERATURE INDICATING WAX PENS, OR OTHER SUITABLE MEANS, TO ENSURE THAT THE TEMPERATURE OF THE SOLE PLATE DOES NOT EXCEED 300°F. TEMPERATURES ABOVE THIS MAY DAMAGE THE ELASTOMER.

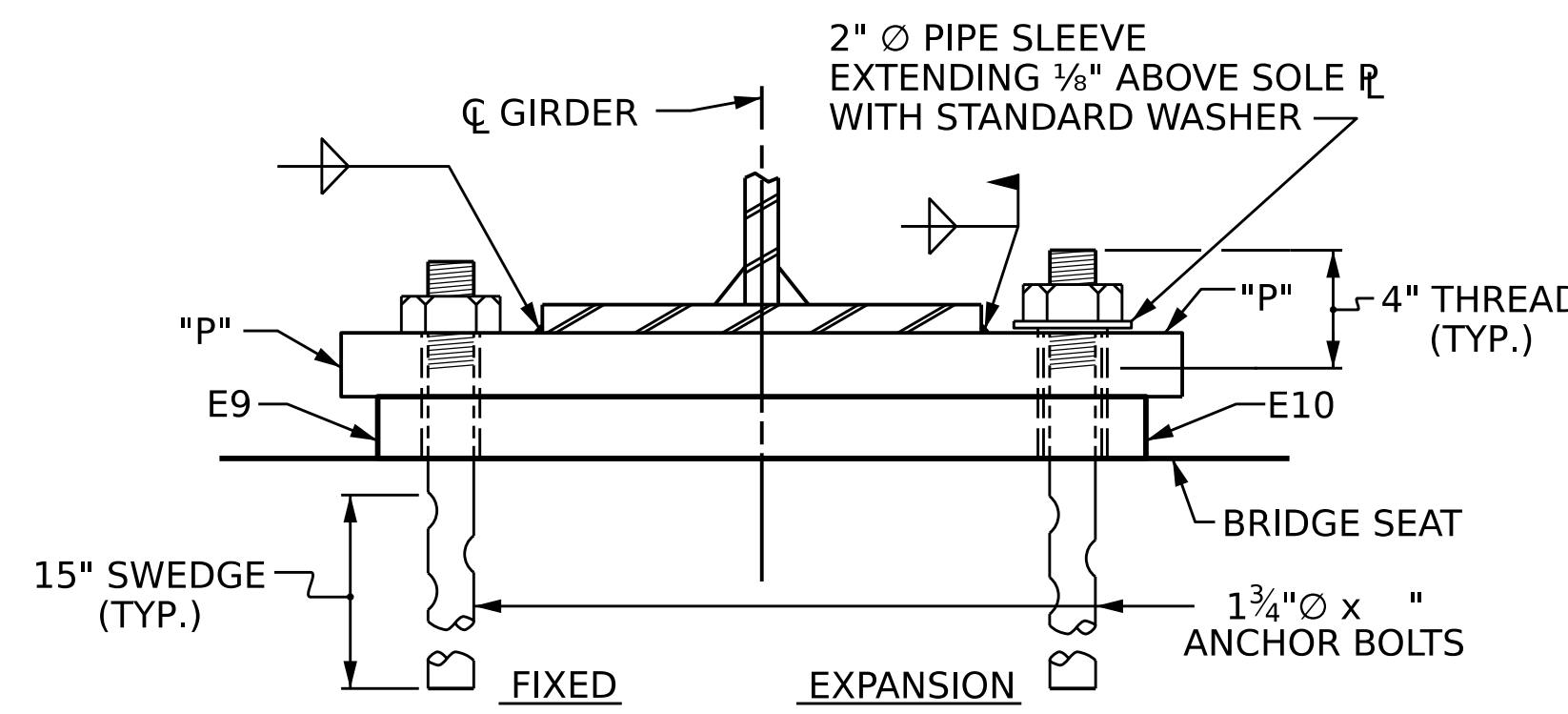
ALL SURFACES OF BEARING PLATES SHALL BE SMOOTH AND STRAIGHT.

THE ELASTOMER IN THE STEEL REINFORCED BEARINGS SHALL HAVE A SHEAR MODULUS OF 0.160 KSI, IN ACCORDANCE WITH AASHTO M251.

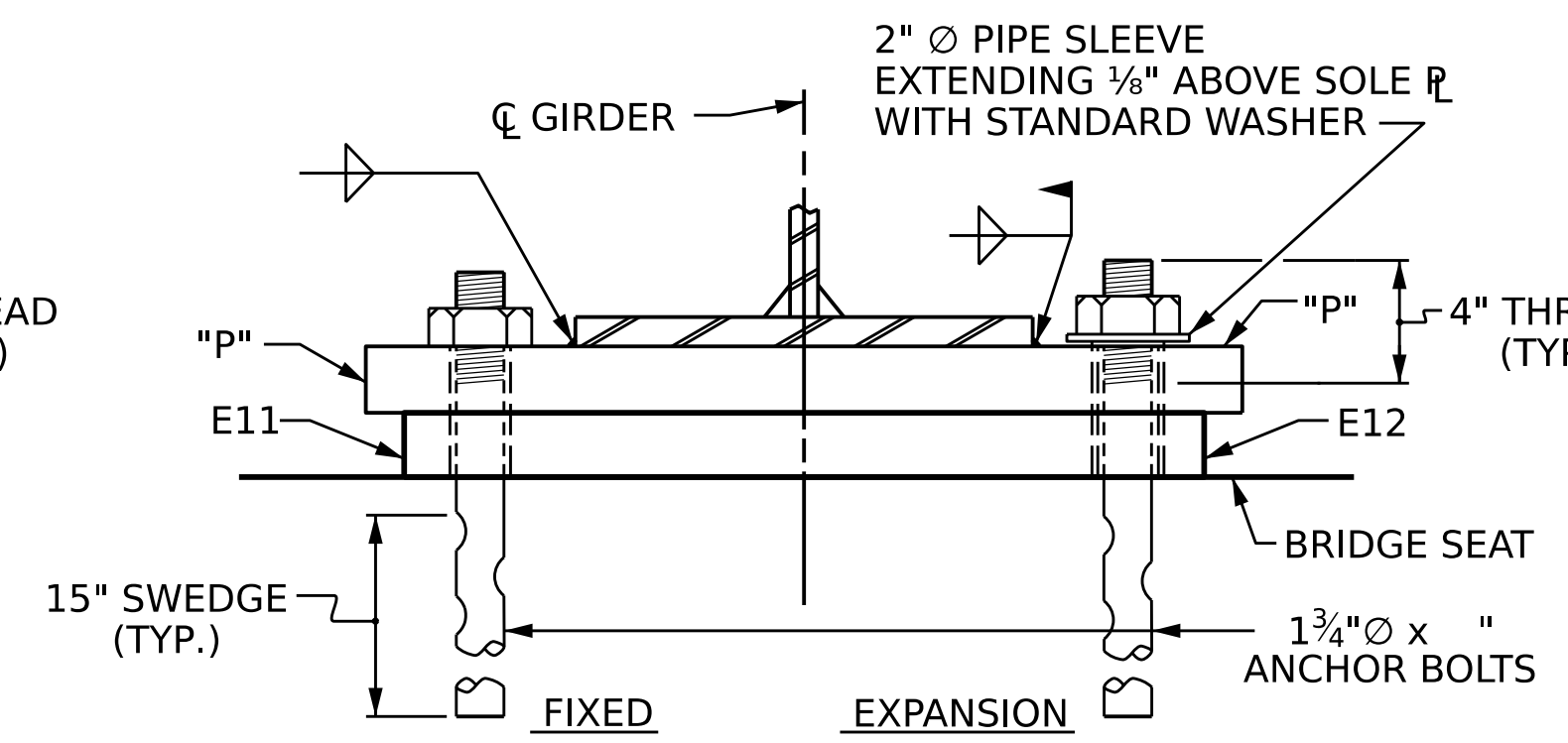
FOR STEEL REINFORCED ELASTOMERIC BEARINGS, SEE SPECIAL PROVISIONS.



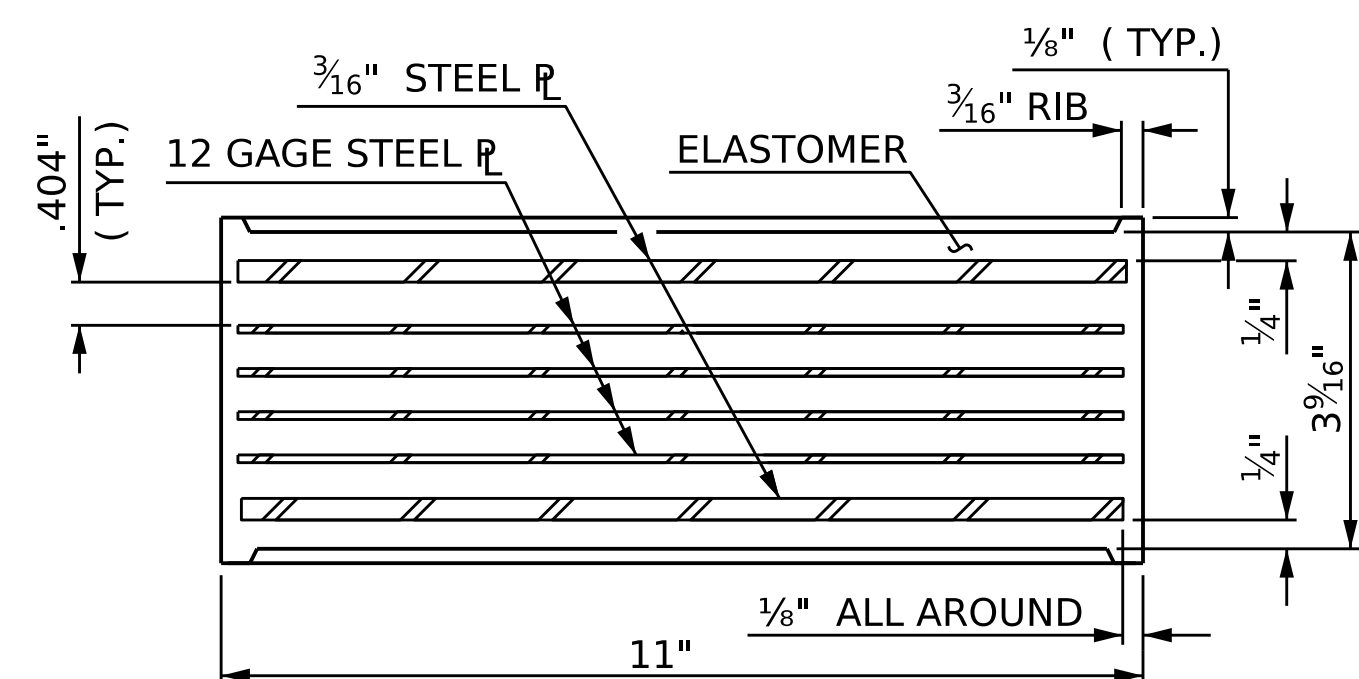
END VIEW



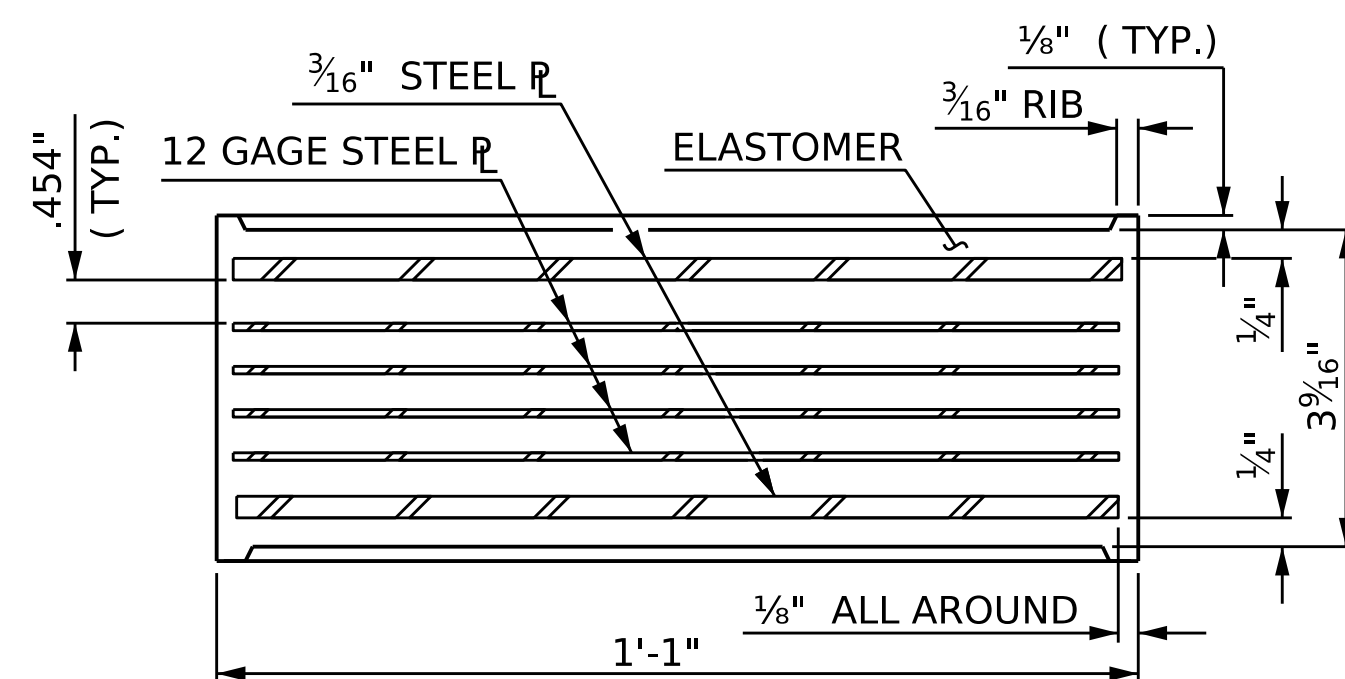
END VIEW



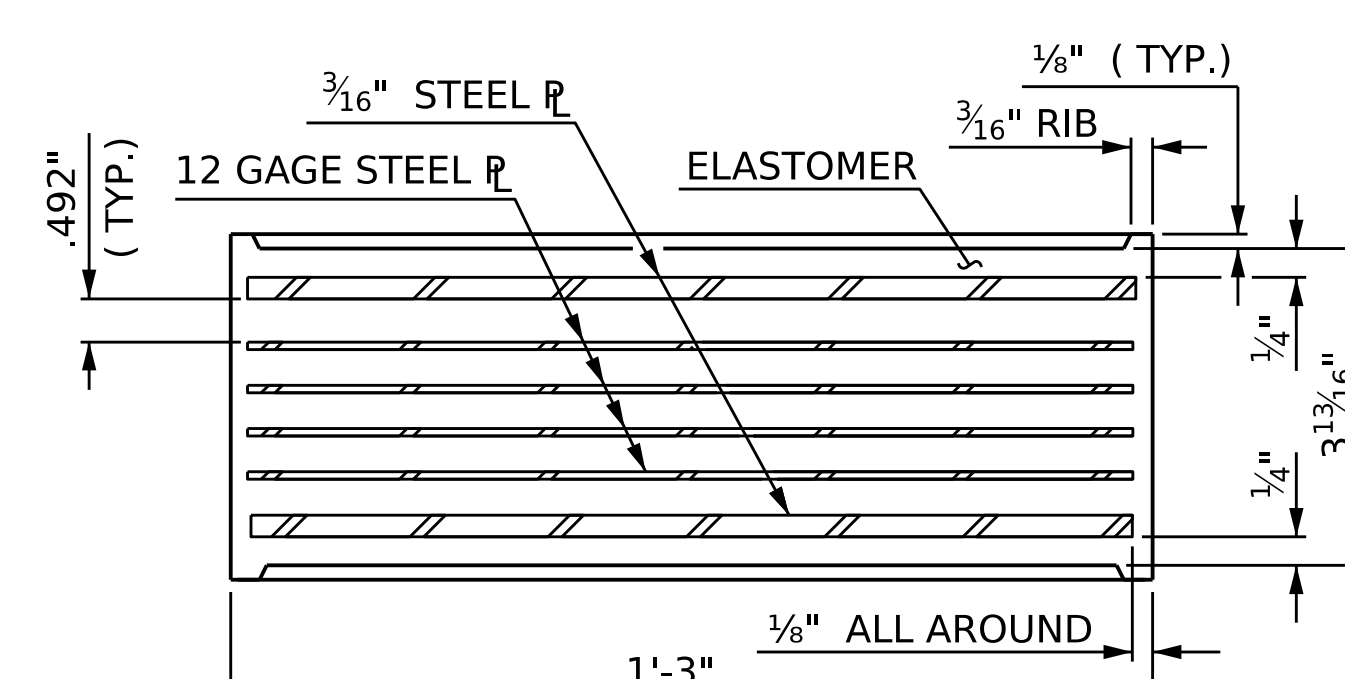
END VIEW



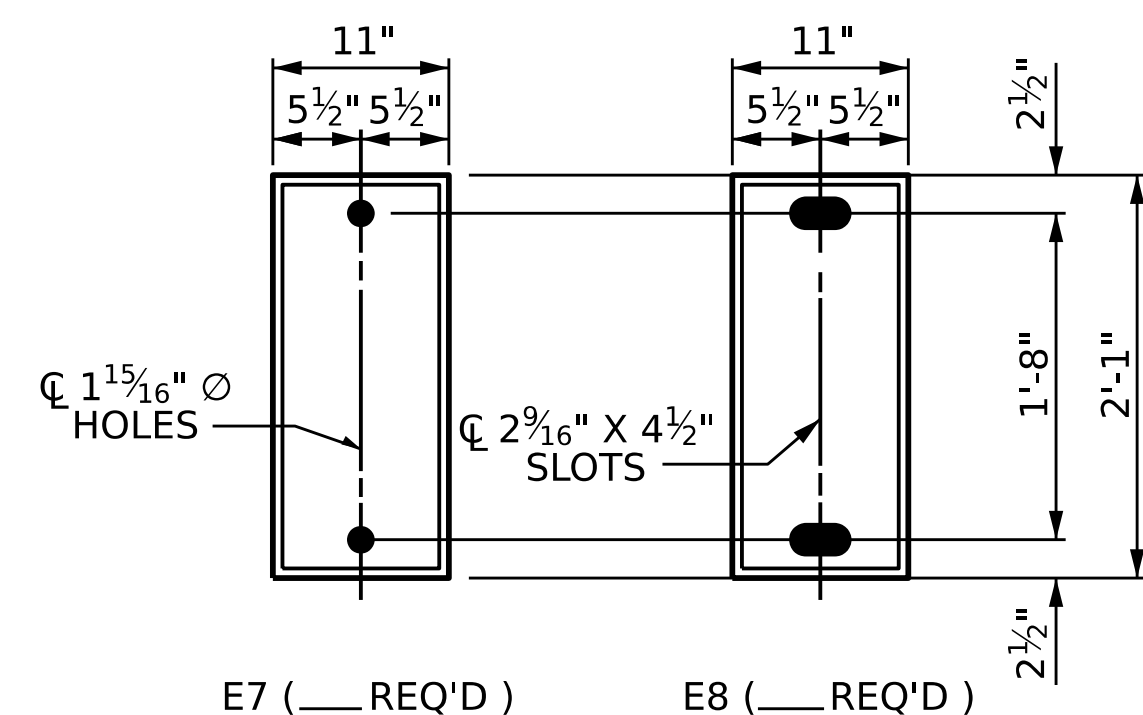
TYPICAL SECTION OF ELASTOMERIC BEARINGS



TYPICAL SECTION OF ELASTOMERIC BEARINGS

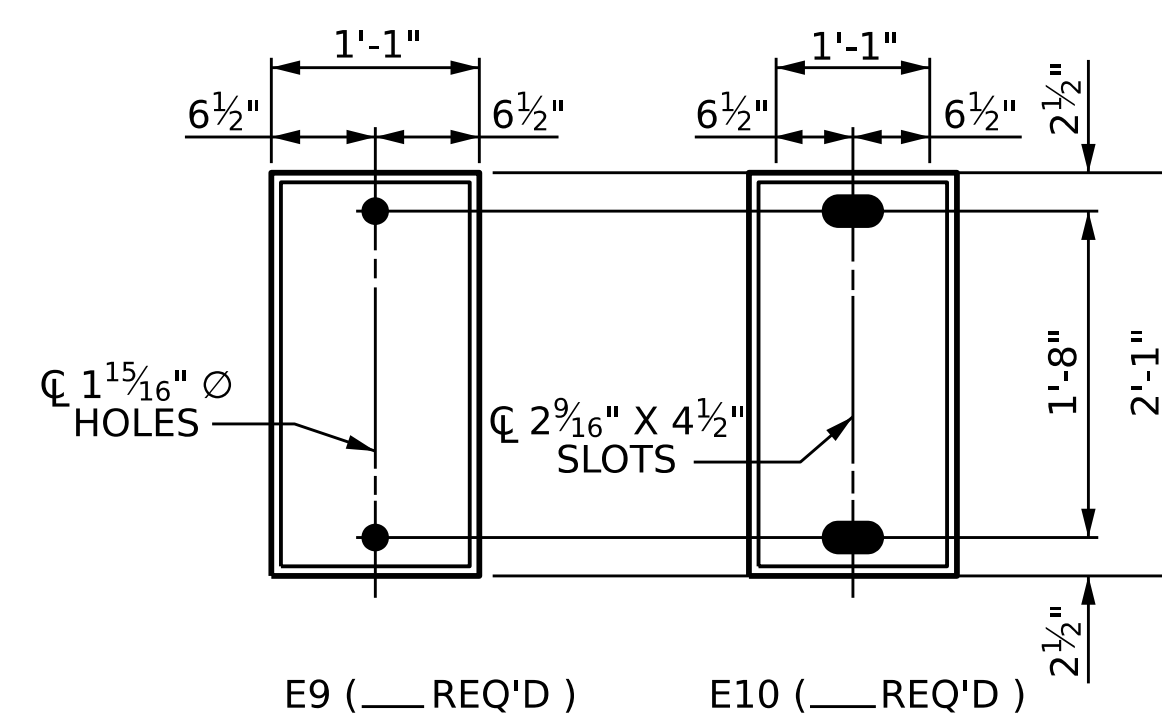


TYPICAL SECTION OF ELASTOMERIC BEARINGS



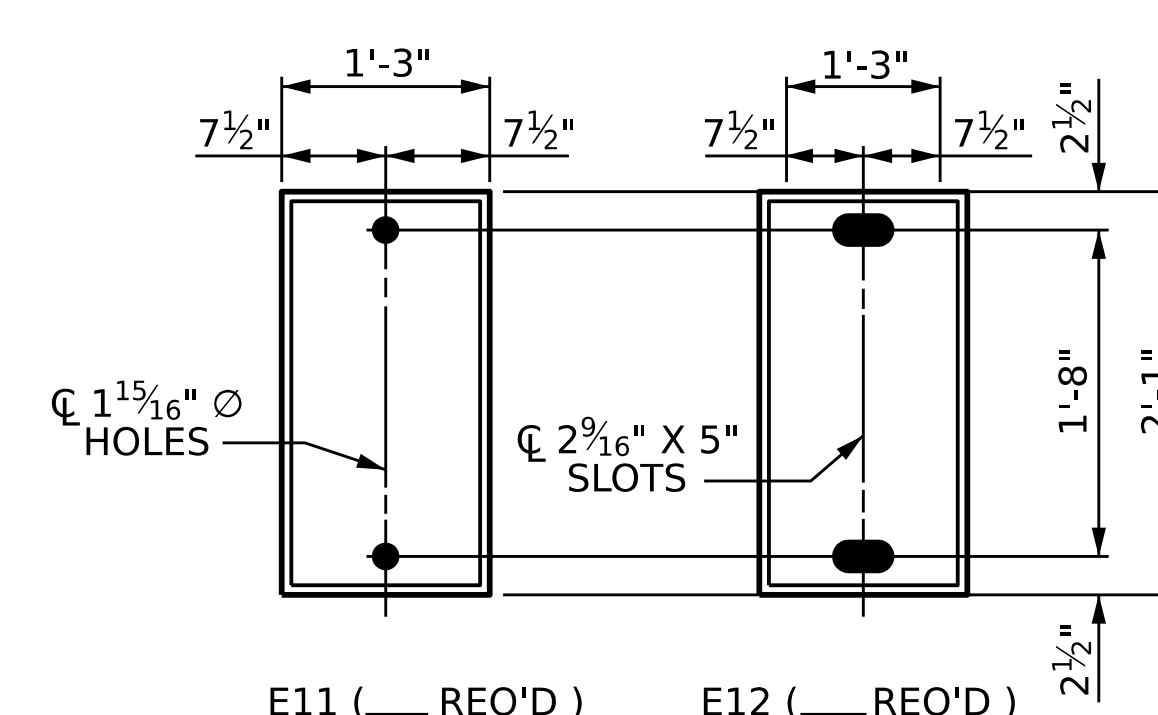
PLAN VIEW OF ELASTOMERIC BEARING

**TYPE IV**



PLAN VIEW OF ELASTOMERIC BEARING

**TYPE V**



PLAN VIEW OF ELASTOMERIC BEARING

**TYPE VI**

|                                 |       |
|---------------------------------|-------|
| MAXIMUM ALLOWABLE SERVICE LOADS |       |
| D.L. + L.L. (NO IMPACT)         |       |
| TYPE IV                         | 310 k |
| TYPE V                          | 335 k |
| TYPE VI                         | 375 k |

PROJECT NO. \_\_\_\_\_

\_\_\_\_\_ COUNTY

STATION: \_\_\_\_\_

STATE OF NORTH CAROLINA  
DEPARTMENT OF TRANSPORTATION  
RALEIGH  
STANDARD  
**ELASTOMERIC BEARING  
DETAILS**  
( STEEL SUPERSTRUCTURE )

|                        |                    |
|------------------------|--------------------|
| ASSEMBLED BY :         | DATE :             |
| CHECKED BY :           | DATE :             |
| DRAWN BY : JMB 11/87   | REV. 6/13 AAC/MAA  |
| CHECKED BY : ARB 11/87 | REV. 12/17 MAA/THC |
|                        | REV. 10/21 BNB/AAI |

**SOLE PLATE DETAILS ( "P" )**

DOCUMENT NOT CONSIDERED FINAL UNLESS ALL SIGNATURES COMPLETED

|           |     |       |              |
|-----------|-----|-------|--------------|
| REVISIONS |     |       | SHEET NO.    |
| NO.       | BY: | DATE: | TOTAL SHEETS |
| 1         |     | 3     | 4            |
| 2         |     | 4     |              |